



Industrial  
Identification  
Products



Continually raising  
the customer service bar

Since 1983, Beaed has been a leader in manufacturing and supplying industrial identification products.

With offices in Alvin, TX, Beaumont, TX, Corpus Christi, TX, and Harvey, LA, Beaed services all major industrial areas, and is committed to providing quality products and services to make your work place safe.

We specialize in custom art design, screen printing, digital printing, offset printing, custom vinyl layout, embossing, and custom engraving. We also provide bilingual signage.

In addition to providing safety and facility identification products, Beaed's main area of expertise is custom signage. With years of experience in the petro-chemical industry, our expert sales staff is knowledgeable in material and application needs that are required in an industrial atmosphere. The sales staff is also dedicated to providing on-site contact and resources for any special service you may require.

Beaed offers complete order fulfillment services for companies of all sizes and from all industries. We handle the warehousing, inventory management, order distribution, and returns processing for your products and literature.

Beaed has developed the reputation of meeting the unique needs of its clients. Please feel free to browse our site at [www.Beaed.com](http://www.Beaed.com) and allow Beaed to provide you with the products and services you require.

**Call Us Today at 800-972-6741 or email [sales@beaed.com](mailto:sales@beaed.com)!**

As a leading manufacturer of stock and custom identification products, we differentiate ourselves through the quality of our products, customer service, delivery and value.

Our focus is always on the customer, listening to your needs and providing solutions that work for you!

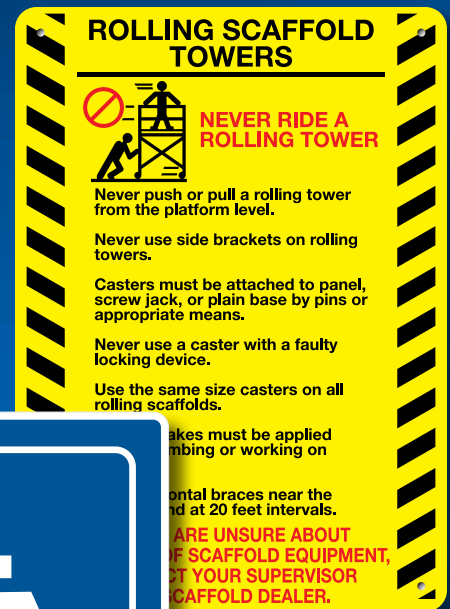


# Signs



Beard carries a large selection of signs, OSHA and ANSI compliant, for all your company's needs. Our signs help alert employees, patrons, and visitors to situations and areas that require extra awareness. Call us for a custom quote today.

- Safety
- Traffic/Roadway/Street
- Floor Signs
- Large Format Signs
- Architectural/Braille Signs
- Facility Signage



All of our signage is available in a variety of materials, including:

- Aluminum
- Polycarbonate
- DiBond
- Foamcore
- Coroplast
- PVC
- Steel
- Acrylic

**NOTICE**

**NO VEHICLES  
ALLOWED  
IN THIS  
AREA**



# Tags

## Custom Tags

Bead provides a variety of durable, easy-to-complete and understand tags for all your needs. Blank, color-coded and OSHA compliant are a few tags from our large product inventory. Here are a few more we offer:

- Safety Tags
  - Blank Tags
  - Equip Status and Production Control
  - Fire & AED Inspection
  - Hazardous Materials
  - Lockout-Tagout Safety
  - Custom Tags
- Bead can, of course, offer completely customized tags made to your specifications.

Tags are available in several materials, including:

- Rigid Vinyl
- Tyvek
- Stainless Steel
- Cardstock
- Paper

BN# 203-1690-08

**\*PRINT ALL INFORMATION\***

E.I.D. #: \_\_\_\_\_ DATE: \_\_\_\_\_

EQUIP. #: \_\_\_\_\_

MAIN PRODUCTS: \_\_\_\_\_ / \_\_\_\_\_ / \_\_\_\_\_

YOUR NAME: \_\_\_\_\_  
(NO INITIALS)

DEPARTMENT: \_\_\_\_\_

SUPERVISOR: \_\_\_\_\_

Beaded

**ISOLATION TAG**

**DANGER NOT OPERATE**

**INSTRUCTIONS**

1. THIS TAG MUST BE ATTACHED WITH A PLASTIC TIE.

2. THE ORIGINAL INFORMATION ON THIS TAG MUST NOT BE ALTERED.

3. UPON AUTHORIZED REMOVAL DISPOSE OF TAG AS PER \_\_\_\_\_

LOCKOUT RULES MUST BE FOLLOWED. ACTION UP TO AND INCLUDING REMOVAL OF EMPLOYMENT. OTHER SIDE

**DRILL BUSHING CODE**

COLOR CODE	HOLE DIAMETER	SETUP NO.

BN# 206-0290-63      beAed

**DANGER**  
DO NOT REMOVE THIS TAG

**SEE OTHER SIDE**

BN# 206-0290-63      beAed

HELL DISTRIBUTION, N. A.

**VISITOR**

00001

lyondellbasell

0001

BN# 212-0291-02      Beaded

**DANGER**

**EQUIPMENT LOCKOUT TAG**

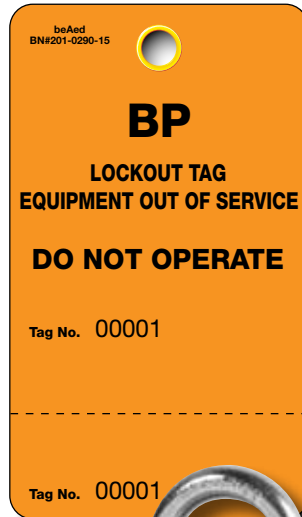
**DO NOT OPERATE**

Signed By: \_\_\_\_\_

Date: \_\_\_\_\_

# Lock-Out/ Tag-Out

Beaed also provides specialty services such as our Lock Box Refurbishment Program! We offer engraving and refurbishment of locks and their lock boxes. The entire process is handled in-house and is custom tailored to customer specification! Services such as this result in reduced labor hours devoted to lock and lock box rehabilitation, and reduced time in purchasing spent on multiple orders. Let us serve you with over 10 years of reconditioning expertise!




UTILITIES																			
500	501	502	503	504	505	506	507	508	509	510	511	512	513	514	515	516	517	518	519
PROPRIETOR UT5					UT5					PROPRIETOR UT5					UT5				
520	521	522	523	524	525	526	527	528	529	530	531	532	533	534	535	536	537	538	539
UT5					UT5					UT5					UT5				
540	541	542	543	544	545	546	547	548	549	001	002	003	004	005	006	007	008	009	010
UT5					UT5					TRANSITION									
100	101	102	103	104	105	106	107	108	109	1	2	3	4	5					
UT10										PERSONAL									
110	111	112	113	114	115	116	117	118	119										
UT10																			



# Custom Engraving

**GC<sup>3</sup> Specialty Chemicals, Inc.**



**DO-1200**  
Metal Precipitant

EMERGENCY TELEPHONE NOS  
713-802-1761 GC<sup>3</sup> Specialty Chemicals, Inc.  
800-424-9300 CHEMTREC

**DANGER:** USE GOGGLES AND GLOVES WHEN HANDLING.  
AVOID CONTACT WITH SKIN AND EYES.  
DO NOT TAKE INTERNALLY.  
REMOVE CONTAMINATED CLOTHING IF EXPOSED.

**FIRST AID:** IN CASE OF CONTACT, FLUSH THOROUGHLY WITH WATER FOR AT LEAST 15 MINUTES. GET MEDICAL ATTENTION IF IRRITATION PERSISTS.

**FOR SPILL:** COVER WITH ABSORBENT MATERIAL. COLLECT AND DISPOSE OF IN ACCORDANCE WITH GOVERNMENT AND LOCAL REGULATIONS.

GC<sup>3</sup> Specialty Chemicals Inc.  
733 Heights Blvd.  
HOUSTON, TX 77007

GALLONS      TANK NO.

Bead specializes in engraved identification products for almost any application, from awards to metal tags and everything in between. We work closely with customers to supply products that can range from the simplest of tags or nameplates to complex customer-supplied parts. Some commonly engraved materials include rigid and flexible plastics, aluminum, brass, and stainless steel.

RE-RATED BY:  
**EXXONMOBIL & SNC LAVALIN**

YEAR RERATED: 2009

MAWP: 100 PSIG @ 540 °F  
HYDROSTATIC TEST @: 249 PSIG

UNIT: PPE-6TIL-8  
ITEM: 1-90

**ALKY PLANT D-300**  
**WATER WASH**

	OPERATING	DESIGN
PRESSURE	55-70#	100#
TEMPERATURE	55-70 DEG	
CET		200 DEG. F
M		37 DEG. F
C		7,028

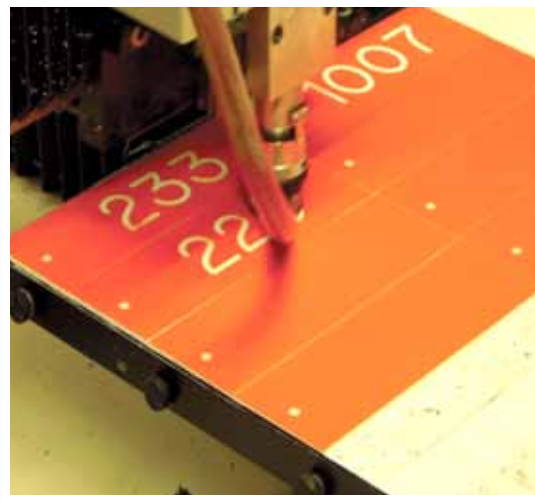
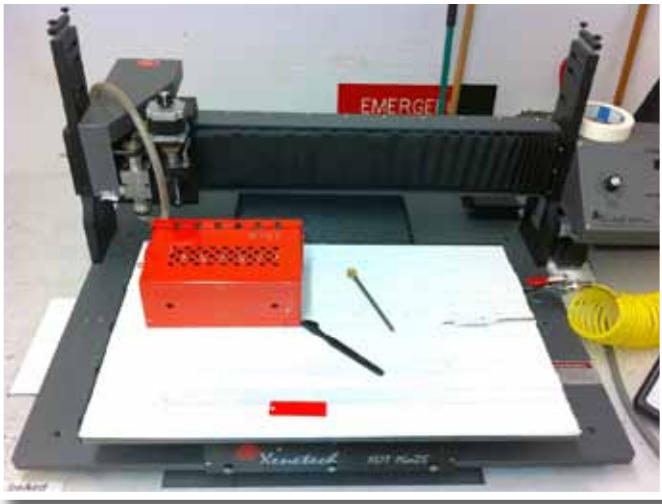
**SULFURIC ACID**

<b>HEALTH</b>	<b>3</b>	<ul style="list-style-type: none"> <li>0. No unusual hazard.</li> <li>1. CAUTION: May cause irritation.</li> <li>2. WARNING: May be harmful if inhaled or absorbed.</li> <li>3. WARNING: Corrosive or toxic. Avoid skin contact or inhalation.</li> <li>4. DANGER: May be fatal on short exposure. Specialized protective equipment required.</li> </ul>
<b>FLAMMABILITY</b>	<b>0</b>	<ul style="list-style-type: none"> <li>0. Not combustible.</li> <li>1. Combustible if heated.</li> <li>2. CAUTION: Combustible liquid Flash point of 100F to 200F.</li> <li>3. WARNING: Flammable liquid Flash point below 100F.</li> <li>4. DANGER: Flammable gas or extremely flammable liquid.</li> </ul>
<b>REACTIVITY</b>	<b>2</b>	<ul style="list-style-type: none"> <li>0. Stable</li> <li>1. CAUTION: May react if heated, or mixed with water.</li> <li>2. WARNING: Unstable or may react if mixed with water.</li> <li>3. DANGER: May be explosive if shocked, heated under confinement, or mixed with water.</li> <li>4. DANGER: Explosive material at room temperature.</li> </ul>
<b>PERSONAL PROTECTION</b>	<b>X</b>	<ul style="list-style-type: none"> <li>0. Stable</li> <li>1. CAUTION: May react if heated, or mixed with water.</li> <li>2. WARNING: Unstable or may react if mixed with water.</li> <li>3. DANGER: May be explosive if shocked, heated under confinement, or mixed with water.</li> <li>4. DANGER: Explosive material at room temperature.</li> </ul>

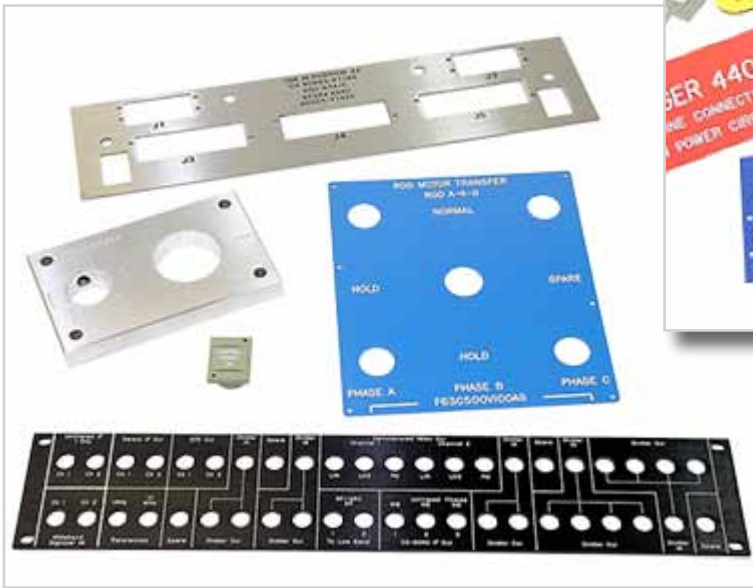
\* POSSIBLE CHRONIC EFFECTS: SEE MSDS FOR TARGET ORGAN EFFECTS & ADDITIONAL HAZARD DATA







IF ANY MAINTENANCE IS PERFORMED ON THIS FLOW METER (SG\_F18DOXO.PV), NOTIFY EHS SPECIALIST. RECORDS OF MAINTENANCE MUST BE MAINTAINED FOR COMPLIANCE WITH THE GREENHOUSE GAS MANDATORY REPORTING RULE (40 CFR 98). A. CASON, 12/1/2009







# Decals



**PRECAUTIONARY STATEMENTS**  
**HAZARDS TO HUMANS AND DOMESTIC ANIMALS**

**DANGER** Corrosive. May cause severe skin irritation or chemical burns on contact. Causes eye damage. Do not get in eyes, on skin or on clothing. Wear goggles or face shield and rubber gloves (PVC or nitrile) when handling this product. Wash skin immediately. Flush contaminated clothing. Avoid contact with areas as soon as possible. Do not return used odors have disposed.

**ENVIRONMENTAL HAZARDS:** This pesticide is toxic to fish and aquatic organisms. Do not discharge effluent containing this product into tanks, streams, estuaries, oceans, or public water bodies in accordance with the requirements of the National Pollution Discharge Elimination System (NPDES) permit and the National Sanitation Foundation's (NSF) permit. Do not discharge effluent containing this product to sewer systems without previously notifying the sewage treatment plant authority. For guidance contact your State Water Board or Regional Office of the EPA.

**PHYSICAL AND CHEMICAL HAZARDS: STRONG OXIDIZING AGENT:** Use only with water according to label directions. Mixing this product with gases such as sulfur, sulfur dioxide, or with ammonia, acids, aldehydes or other chemicals will release hazardous gases irritating to eyes, lungs and mucous membranes.

**KEEP OUT OF REACH OF CHILDREN**  
**DANGER**

**FIRST AID**

**IF SWALLOWED:**  
 - Rinse mouth with water or dilute immediately for treatment or advice.  
 - Have person sip small sips of water if able to swallow.  
 - Do not induce vomiting unless told to do so by the poison control center or doctor.  
 - Do not get anything into mouth to vomit.

**IF IN EYES:**  
 - Hold eyes open and rinse slowly and gently with water for 15-20 minutes.  
 - Remove contact lenses, if present, after the first 5 minutes, then continue rinsing the eye.  
 - Call a poison control center or doctor for treatment advice.

**IF ON SKIN OR CLOTHING:**  
 - Take off contaminated clothing.  
 - Rinse skin immediately with plenty of water for 15-20 minutes.  
 - Have a product control center or doctor for treatment advice.  
 - Call a poison control center or doctor for treatment advice.

**NOTE TO PEERSON:**  
 - Washable muslin material may compromise the use of plastic waste.

NO WARRANTY, EXPRESS OR IMPLIED, OR MERCHANTABILITY FITNESS FOR A PARTICULAR PURPOSE OR OTHERWISE IS MADE. THE PRODUCT IS INTENDED FOR USE AS DESCRIBED. THE USER SHALL BE RESPONSIBLE FOR OBTAINING ALL NECESSARY PERMITS AND APPROVALS. THE USER SHALL BE RESPONSIBLE FOR OBTAINING ALL NECESSARY PERMITS AND APPROVALS.

**DIXICHLOR**  
**SANITIZER, DISINFECTANT**  
**% BY WT.**  
 ACTIVE INGREDIENT: SODIUM HYPOCHLORITE 10%  
 INERT INGREDIENTS 90%  
**TOTAL: 100%**

**DIRECTIONS FOR USE**  
**IT IS A VIOLATION OF FEDERAL LAW TO USE THIS PRODUCT IN A MANNER INCONSISTENT WITH ITS LABELING.**

Available Strength	Quarts	Liquid Ounces
5.25% DTHO	100	12.5
10% DTHO	100	25.0
15% DTHO	100	37.5
20% DTHO	100	50.0
25% DTHO	100	62.5
30% DTHO	100	75.0
35% DTHO	100	87.5
40% DTHO	100	100.0

**IMPORTANT! ALL SANITIZING APPLICATIONS FOR ALL FOOD CONTACT SURFACES AND OBJECTS:**  
 - Remove food particles by brushing, scraping and/or when necessary, washing. Wash thoroughly with a good detergent or compatible cleaner and rinse with potable water before application of DIXICHLOR solution. Use all surfaces thoroughly with DIXICHLOR solution by immersion, flooding or spraying. Contact time must be at least two minutes. Once solution and spray do not wash with potable water after sanitizing. Dioxichlor solution must not be used for sanitizing purposes. Prepare a fresh solution daily if not within 30 minutes of use.

**SANITIZATION OF POROUS FOOD CONTACT SURFACES (SPRAYS/DIP METHOD) - Pre-clean all surfaces after use. Prepare a 200 ppm available chlorine sanitizing solution of surface to be sanitized by thoroughly mixing the product in a ratio of 8 oz. product with 10 gallons of water. Use spray or flooding equipment which can deliver equipment with potable water after use. Thoroughly spray or fog all surfaces to be sanitized before sanitizing to clean. Contact time for 200 ppm available chlorine solution is 2 minutes. Prior to using equipment, rinse all surfaces with sanitizing solution by thoroughly mixing 2.5 oz. of this product with 10 gallons of water.**

**SANITIZATION OF NONPOROUS FOOD CONTACT SURFACES (SPRAYS/DIP METHOD) - Pre-clean all surfaces after use. Use a 200 ppm available chlorine solution to control bacteria. Mix of 8 oz. of 25% DTHO with 10 gallons of water to produce a 200 ppm available chlorine solution. Prepare a 200 ppm available chlorine solution by thoroughly mixing the product in a ratio of 2.5 oz. product with 10 gallons of water. Prepare a 200 ppm solution by thoroughly mixing the product in a ratio of 8 oz. product with 10 gallons of water. Use spray or flooding equipment which can reach hypochlorite solution. Always wear eye protection. Do not use equipment with potable water after use. Thoroughly spray or fog all surfaces and wet, allowing excess liquid to drip. Contact time for 200 ppm available chlorine solution is 2 minutes. Prior to using equipment, rinse all surfaces treated with a 200 ppm solution with a 200 ppm solution.**

**SWIMMING POOL WATER DISINFECTION**

M: Adjust and maintain pool water pH to between 7.2 and 7.6. Adjust and maintain the alkalinity of the pool to between 50 to 100 ppm. To maintain the pool add monthly or by a feeder device 13 oz. of this product for each 10,000 gallons of water to pool's 5 to 10 ppm available chlorine by weight. Check the level of available chlorine residual between 0.8 to 1.0 ppm by weight. Sanitized pools should maintain a residual of 1.0 to 1.5 ppm available chlorine. Test the pH, available chlorine residual and alkalinity of the water frequently with appropriate test kits. Frequency of water treatment will depend upon temperature and number of swimmers. Every 7 days, or as necessary, superchlorinate the pool with 64 to 128 oz. of product for each 10,000 gallons of water to pool's 10 ppm available chlorine by weight. Check the level of available chlorine with a test kit. Do not reenter pool until the chlorine residual is between 1.0 to 3.5 ppm. At the end of the swimming pool season or when water is to be drained from the pool, chlorine must be allowed to dissipate from treated pool water before discharge. Do not chlorinate the pool when the pool is for discharging.

**WINTERING POOLS:** While water is still clear & clean, apply 4 oz. of product per 1000 gallons, while filter is running, to obtain a 3 ppm available chlorine residual, or determined by a suitable test kit. Cover pool, shock treat, filter and heater components for winter by following manufacturer's instructions.

**DISINFECTION OF DRINKING WATER (POTABLE):**  
 PUBLIC SYSTEMS: Use a ratio of 1.5 oz. of this product to 100 gallons of water. Begin feeding this solution with a hypochlorinator and a flow controller. Check water frequently with a chlorine test kit. Bacteriological sampling must be conducted at a frequency no less than that prescribed by the National Sanitation Foundation's Water Regulations. Contact your local Health Department for further details.

**INDIVIDUAL SYSTEMS: ODOUR WILL BE:** Upon completion of the chlorinating cycle, the odor of the chlorine will be noticeable. The odor can be removed by thoroughly mixing 1.5 oz. of this product into 10 gallons of water. After covering the well, pour the sanitizing solution into the well through both the pipe/water coating and the pipe. Repeat the entire cycle of the pump solution also with the sanitizing water is added. Stop pump and wait at least 24 hours. After 24 hours, flush rest of all tanks of chlorine have been removed from the water. Consult your local Health Department for further details.

**NOTE:** This product degrades with age. Use a chlorine test kit and measure chlorine as necessary to obtain the required level of available chlorine.

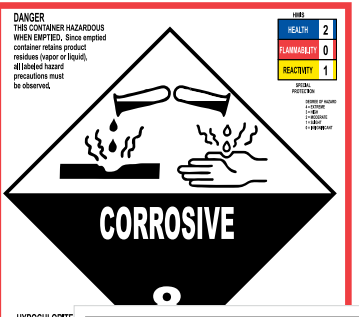
**REFER TO THE DIXICHLOR SUPPLEMENTAL BROCHURE FOR ADDITIONAL DIRECTIONS AND USES.**

**STORAGE AND DISPOSAL:**  
 Store in a cool, dry area away from direct sunlight. In case of spill, contain the residue of the product. Do not reuse this product for any other purpose. Changing the contents of the container. Cleaning, before refilling, is the responsibility of the user. Triple verify container. Do not use for recycling or reconditioning, or purchase and dispose of in a sanitary landfill, or otherwise, as directed by local and state authorities. If burned, stay out of smoke. Product or residue that cannot be used, should be cleaned with water and disposed of in a sanitary landfill or incinerated. Do not use for recycling, disposal or cleaning of equipment.

**HYPOCHLORITE SOLUTION**  
**UN 1791**

**NET CONTENT**  
 15 GALL  
 30 GALL  
 54 GALL  
 300 GALL

**BULK**  
 (NSF)



**DANGER**

**Hot**

**AREA IN FRONT OF ELECTRICAL PANEL MUST BE KEPT CLEAR FOR 36 inches**

**NET CONTENT**  
 15 GALL  
 30 GALL  
 54 GALL  
 300 GALL

**BULK**  
 (NSF)



**WARNING**

**Arc Flash and Shock Hazard**  
**Appropriate PPE Required**

**1220 mm** Flash Hazard Boundary  
**1** Cal/cm<sup>2</sup> Flash Hazard at 455 mm (18")

**Category 0** Untreated Cotton Clothing

**480 VAC** Shock Hazard when cover is removed  
**1067 mm** Limited Approach (Fixed Circuit)  
**305 mm** Restricted Approach  
**25 mm** Prohibited Approach

**Panel: 7001-PP 480V**



**HAZARDOUS WASTE**

**8**

**Waste Stream**

**HANDLE WITH CARE!**

**NON-HAZARDOUS WASTE**

**Waste Stream**

**Start Date**

**NON-HAZARDOUS WASTE**

**HMIS® HMIS® HMIS® HMIS® HMIS®**

**HEALTH**

**FLAMMABILITY**

**PHYSICAL HAZARD**

**PERSONAL PROTECTION**

beAed

**HMIS® HMIS® HMIS® HMIS® HMIS®**



# Stop Unsafe Work Because I Care

Beaed makes it easy to place a message on almost any surface. Our decals and labels are perfect for identifying, protecting and promoting any business. Some categories include::

- Admittance & Exit
- Lockout/Tagout
- Bilingual & Spanish
- Biohazard & Hazardous Material
- Construction & Job Site
- Electrical
- Equipment, Machinery & Operations
- Safety & First Aid
- Housekeeping & Environmental
- Radiation, Laser & Radio Frequency
- Traffic & Industrial

Check out our selection of off-the-shelf decals and labels at [www.bead.com](http://www.bead.com).  
Beaed also offers custom decals. Please call us for a quote.



# Pipeline Signage



**P**  
**R**  
**O**  
**P**  
**Y**  
**L**  
**E**  
**N**  
**E**

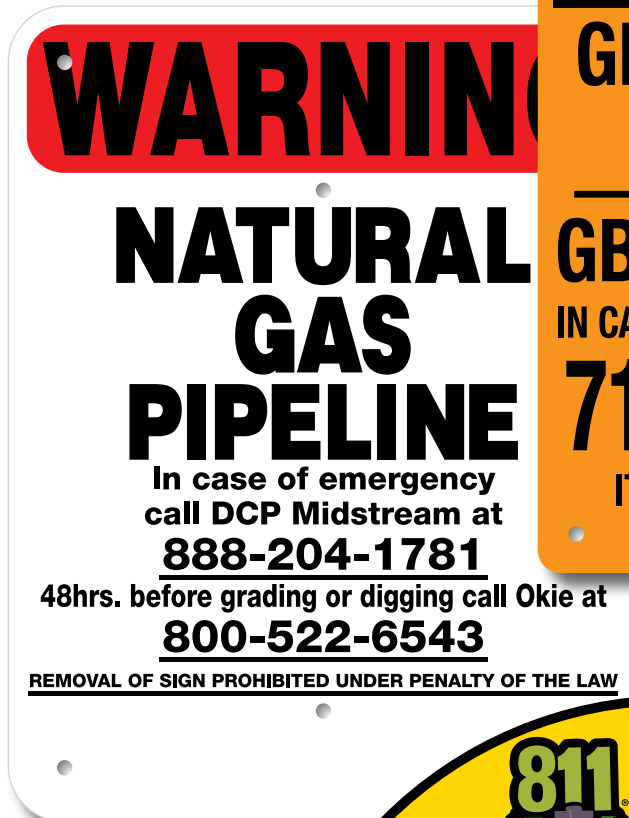


**W**  
**A**  
**R**  
**N**  
**I**  
**N**  
**G**

**P**  
**I**  
**P**  
**E**  
**L**  
**I**  
**N**  
**E**

IN CASE OF EMERGENCY  
CALL  
**1-800-525-7516**  
BEFORE EXCAVATING  
CALL  
**1-800-272-3020**

[Blank white box]



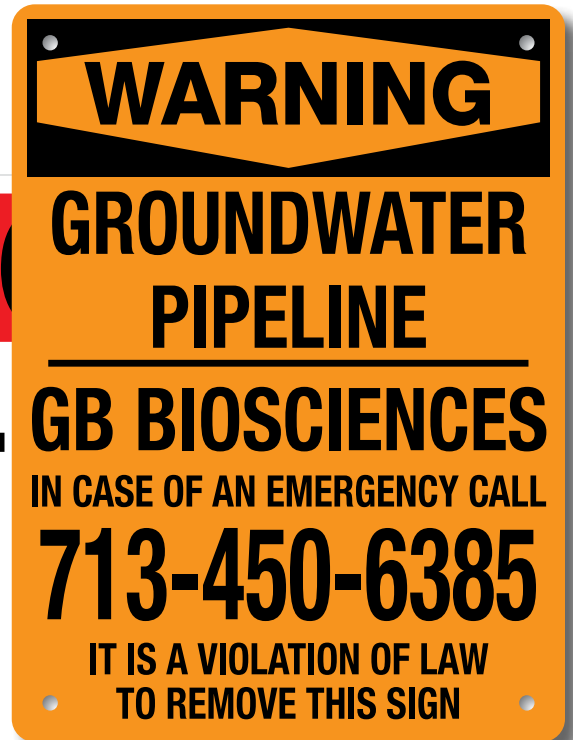
**WARNING**

**NATURAL  
GAS  
PIPELINE**

In case of emergency  
call DCP Midstream at  
**888-204-1781**

48hrs. before grading or digging call Okie at  
**800-522-6543**

REMOVAL OF SIGN PROHIBITED UNDER PENALTY OF THE LAW



**WARNING**

**GROUNDWATER  
PIPELINE**

**GB BIOSCIENCES**  
IN CASE OF AN EMERGENCY CALL  
**713-450-6385**

IT IS A VIOLATION OF LAW  
TO REMOVE THIS SIGN



**811** Know what's below.  
Call before you dig.

**NOTICE:** DAMAGE OR REMOVAL OF THIS SIGN IS A FEDERAL OFFENSE  
SUBJECT TO A \$5000 FINE AND/OR 1 YEAR IMPRISONMENT

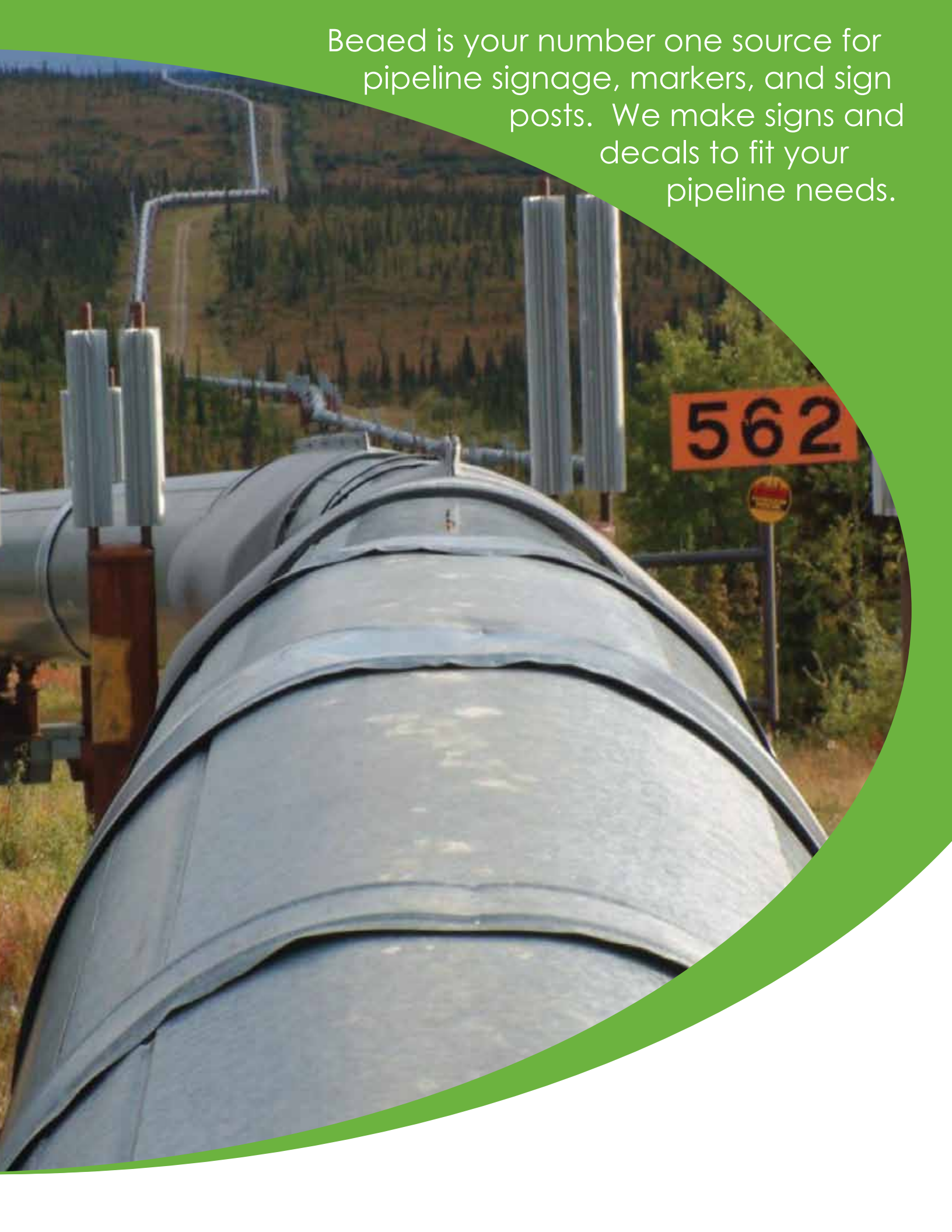
**WARNING**

**PETROLEUM  
PIPELINE**

BEFORE EXCAVATING OR IN EMERGENCY  
CALL TOLL FREE 1-800-525-7516

**Pipeline Operations**

Beaded is your number one source for pipeline signage, markers, and sign posts. We make signs and decals to fit your pipeline needs.



# Offshore Marking Systems



**PRIDE** COMPANY AND SAFETY COMMUNICATIONS

Head Office      Base      Training Center

**Risk Safety Systems – Safety Awareness Display**

**VIKING INTERNATIONAL** I- 10 – بهخترین بۆ کامپی سهر مکی هه لکۆلین –

**WELCOME TO MAIN CAMP RIG - I-10**

سهر پهرش تيارى چادر گه  
**CAMP BOSS**

پۆژانى بى پى رووداو و كساتى له دهست چوو  
**LOST TIME INCIDENT FREE DAYS** 0123

كۆى پۆژانى بى پى رووداو  
**TOTAL RECORDABLE INCIDENT FREE DAYS** 0123

پى و سته له سه ره هموو ميو انان سه ردانى سه ر پهرش تيارى چادر گه بكنه  
**ALL NEWCOMERS TO REPORT TO THE CAMP BOSS**

**WATER INJECTION →**  
**WATER INJECTION →**



**PRIDE** **MUSTER LIST**  
Deep Ocean Ascension

**Abandon Ship Stations**

**MUSTER STATIONS ABANDON SHIP**

**ESCAPE ROUTES ABANDON SHIP**

**Emergency Instructions**

**DIAL 3001 FOR ALL EMERGENCIES**

**DIAL 3001 FOR ALL EMERGENCIES**



Beaed offers full service solutions for the Offshore Industry.  
Just a few of the products we offer are:

- Pipe Markers
  - Permit and Notice Boards
  - Phosphorescent Markers & Decals
    - Floor and Platform Decals
    - IMO, Fire Hazard, Safety & Mandatory Pictograms
    - Multiple-Language Safety Signs and Markers

Beaed is proud to offer signage and marking solutions for the offshore industry!  
Our material is compliant with the following Standards:

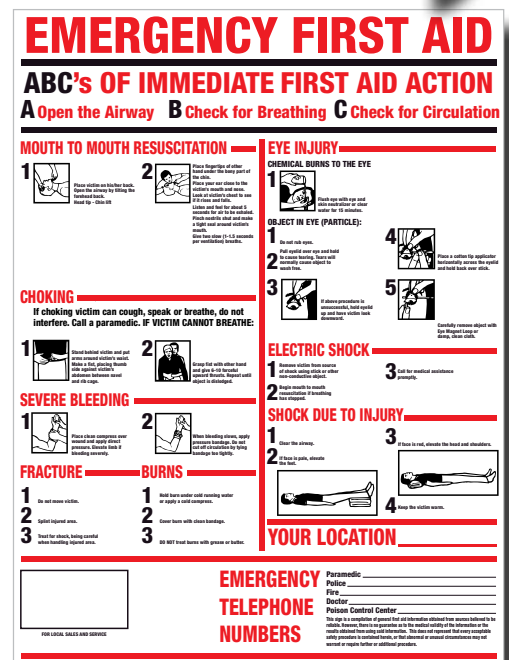
- |  |                               |
|--|-------------------------------|
| German Industrial Standard                   | DIN 67510                     |
| American Society for Testing and Materials   | ASTM 2072                     |
| International Standards Organization         | ISO 15370                     |
| International Maritime Organization          | IMO RES A. 752 (18)           |
|  | EU MARINE EQUIPMENT DIRECTIVE |
| Photoluminescent Safety Products Association | PSPA CLASS B                  |



# Custom Products

If you can't seem to find what you're looking for, Bead can always create products to your custom specifications! A few of the items we can create for you include:

- Dry Erase Boards
- Lock Boards
- Lock Cabinets
- Permit Cubbies
- Custom Acrylic Bins
- Custom Signs



Don't forget your  
**REUSABLE BAGS**

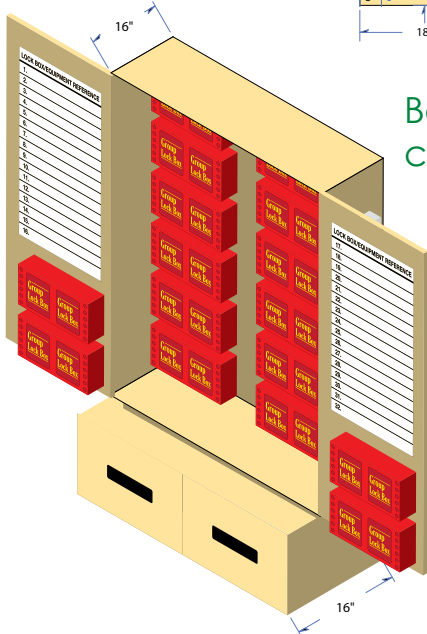
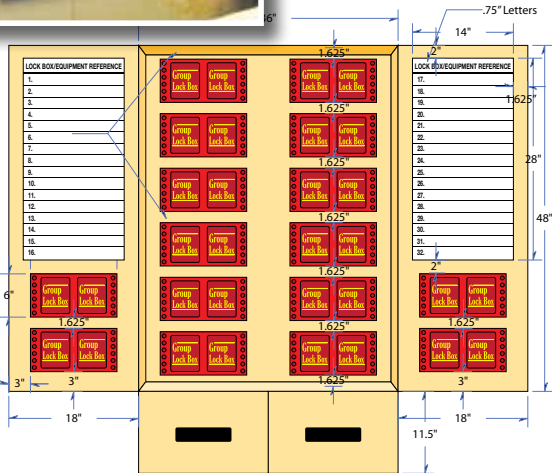
We cannot be responsible for damage caused by shopping carts left in parking lot. Thank you for your cooperation.



Don't forget your  
**REUSABLE BAGS**

We cannot be responsible for damage caused by shopping carts left in the parking lot. Thank you for your cooperation.





Bead can take you from concept to completion!



**STOP DDU Process Safety Overview Communication Board**  
 BP EMPLOYEES, CONTRACTORS, AND VISITORS BEFORE PROCEEDING.  
 Read the information contained here. Badge In/Sign In, talk to Unit Operator.  
 Daily entry into this unit is authorized only if: 1) you have had Refinery PFD Training as required, and 2) you are current on the Unit PFD Communication Displayed here.

**DDU Process Overview**  
 The DDU consists of three separate units identified as DDU-100, DDU-200, and DDU-300. These units desulfurize distillates such as gasoline and diesel in the presence of hydrogen and produce H<sub>2</sub>S and light naphtha as byproducts. Other feeds occasionally processed in the DDU are light color gas oil, RHU light distillate, light cut cycle oil and heavy cut naphtha. The conversion takes place over cobalt molybdenum catalyst beds at moderate temperature and pressure at DDU-100/200. The operation on DDU-300 takes place over cobalt molybdenum catalyst beds at higher temperature and pressure. The products of these units are aviation fuels and distillate blending base for highway diesel and heating fuel.

Sources of Energy	Hazards	Sources of Energy	Hazards
Biological	Energy in life forms including wildlife and viruses or bacteria (e.g., as found in sewage systems, drain lines, cooling systems).	Mechanical	Mobile equipment, as well as moving parts on stationary equipment and rotating equipment. Non-covered items whose operation is not apparent from the ground level. Sharp edges of tools and equipment.
Chemical	Strains, pulls, twists, pinch points, body positioning, etc.	Electrical	Noise (greater than 120 dBA) from equipment or tools. Hand-saw construction.
Electrical	Energy in the form of reactive or life-threatening gases, vapors, mists, etc., which are highly toxic, corrosive, asphyxiating, irritant, or otherwise harmful. Other feeds occasionally processed in the DDU are light color gas oil, RHU light distillate, light cut cycle oil and heavy cut naphtha. The conversion takes place over cobalt molybdenum catalyst beds at moderate temperature and pressure at DDU-100/200. The operation on DDU-300 takes place over cobalt molybdenum catalyst beds at higher temperature and pressure. The products of these units are aviation fuels and distillate blending base for highway diesel and heating fuel.	Pressure	An water, pneumatic, hydraulic, springs, gases, are all pressure or other of various energy. Pressure in excess of design pressure. Steam, and utility systems.
Thermal	All types of voltages and electricity including high voltage power systems (Alternating Current (AC), Direct Current (DC), and High Voltage (HV) and HVDC).	Radiation	Sharp, radio waves, creating radiation. Radioactive Sources (X-ray).
Safety	A naturally occurring energy that causes movement or falling that affects lifting tasks, working at heights, and falling objects.	Thermal	Hot or cold surfaces and fluids (temperatures 100 to 700°F) from insulation, process streams and equipment. Chemical reactions, ambient temperature where applicable. Oil, diesel, and combustible materials, Pyrophoric Iron Sulfide.

**Safety Work Practices Specific to DDU:**  
 Follow HSE policies, LOTO, barricade areas and procedures, and - consult with operator prior to starting a unit visit.  
 Consult with operator and Control of Work (COW) process for additional PPE and other protective measures for permitted work activity.

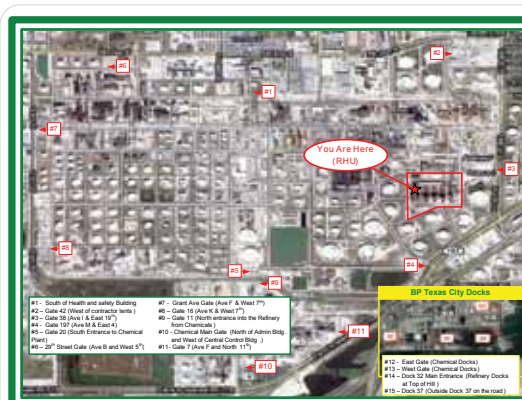
**For Permitted Work, Control of Work Will Keep You Safe!**

**To Report an Emergency:** Call 21911 or 21765 on any plant phone, or use the "Emergency Button" on plant radios.  
 DDU Contact Radio Channel / Phone #: Radio - Operations / Chief Operator / Shift Supv DDU Asset Coordinator (409) 641-6872 Radio - Maintenance Maintenance Supervisor (409) 645-1200

**Alarms / Response:** Evacuation applies to Non-essential personnel in affected unit or immediate area. Evacuate crosswind and upwind to safe Muster Point (See Muster Points below).

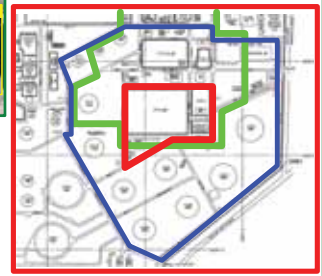
Emergency Type	Alarm Notification	Response Required
Emergency E2-1	3 Blasts of Unit Warbler Horn, Radio Announcement	Evacuation of Non-Essential Personnel crosswind and upwind to safe Muster Point
Emergency E2-2 (in adjacent units)	2 Blasts of Unit Warbler Horn, Radio Announcement	Evacuation of Non-Essential Personnel crosswind and upwind to safe Muster Point
Total Evacuation	Continuous Unit Warbler Horn, Radio, DDU Announcement	Evacuation of all personnel crosswind and upwind to safe Muster Point
Unit Gas Release - Alkyd or Other	Unit Warbler Horn, Radio, DDU Announcement	Evacuate, assemble crosswind and upwind, if in Shelter in Place holding area
Test or Return to Normal	1 Blast of Unit Warbler Horn, Radio, DDU Announcement	Test or Resume Work

Personnel must NEVER shelter-in-place to escape from a flammable or explosive vapor cloud.



Refinery Plot Plans with Unit Location & Muster Points in Event of Emergency

- RHU Exclusion Zones :**
- Red line: Exclusion Zone -1 (EZ-1)
  - Blue line: Exclusion Zone -2 (EZ-2)
- Adjacent Exclusion Zones :**
- Green line: CalFeed Exclusion Zone -2 (EZ-2)



# Commercial Printing

## FurmaFast

**EMERGENCY REPAIR KIT**

The emergency repair solution

**Furmanite FurmaFast is easy to install, durable and cost-effective. Keep it on hand to deal with those unexpected events.**

You can't plan your emergencies for convenient times. All too often, leaks can't wait for a service technician to arrive, or the necessary equipment to be shipped. You need the leak stopped now, right this second. With FurmaFast from Furmanite, you have at your immediate disposal a durable and cost-effective solution that will help you deal with these events in a simple, prompt and reliable manner. FurmaFast can save your plant time and money on a regular basis.

**FurmaFast - The Easy Solution**

FurmaFast, one of our range of composite repair technologies, is a resin-impregnated, knitted fiberglass tape that will adhere to steel, PVC, fiberglass, concrete and all forms of metal pipes. FurmaFast combines a fast-curing epoxy putty or rubber strap to put a stop to the leak with the composite wrap applied on top to provide strength and support, producing a reliable and durable solution that can be used to repair leaks, reinforce pipes and protect against corrosion, abrasion and impact. Once the leak has been stopped you have the time to decide on and implement the best course of action for that line.

FurmaFast can be applied to stop leaks on pipes of all sizes, it is resistant to a wide range of chemicals, can be applied underwater, and - since it requires no mixing or measuring - is ideal to keep on hand for emergencies or simply for everyday use. FurmaFast is suitable for use up to 365°F (185°C), hardens in as little as 5 minutes and reaches working strength in about 30 minutes. FurmaFast has been tested to NSF 61 standards for drinking water safety, and can be used in emergency industrial, marine, mining, municipal, and offshore platform repair situations.

**FURMANITE**  
Composite Repair Technology

**ON-LINE LEAK SEALING SOLUTIONS**

## World's First On-Line Leak Sealing Provider for Effective Efficient Leak Sealing Solutions

Find a global catalog of diverse engineered and emergency repair, Furmanite can help your assets remain productive and profitable.

For gas, liquids, oils, chemicals or hydrocarbons, on-line leak-sealing solution.

Fire wraps for narrow gap flanges to fully engineered and custom fabricated designs. Furmanite always offers active and cost-efficient options for sealing on-line. For an immediate solution, we'll create a one; in fact, almost every unique used today was first developed by Furmanite. Furmanite, the dominant leak sealing company dates back to 1929 when he developed his pre-packaged ship's boiler repair kits into the on-line leak sealing service company. Since then, Furmanite has established a reputation as a pioneer of Leak Sealing technology and a leader for clients around the world.

**Solution for Any Environment**

Our technology base that has been expanded and refined for over 80 years has the expertise to repair on-line leaks in virtually any environment, including, but not limited to: steam, air, gas, liquids, oils, chemicals.

Operating from vacuum to 6,300 psi and from cryogenic to 1,600°F

**Solution for Any Component or System**

- Threaded Connections
- Turbine Joints
- Exchangers
- Transformers
- And virtually any other leaking system

*Continued on reverse side →*

**FURMANITE**  
MAXIMIZING ASSET UPTIME

Support

THE UNIVERSITY OF TEXAS  
**MD Anderson Cancer Center**  
**Children's Art Project™**

[www.childrensart.org](http://www.childrensart.org)

**Transfer Time Extended to**

# 3 HOURS

brought to you by the

## NEW METRO

and the **NUMBER 3**

with your METRO Q® Fare Card

**New METRO**  
Going Places  
713-635-4000 • Ride

**FURMANITE**

**Larry D. McSwain**  
Senior Account Manager

Furmanite America, Inc.  
1200 Atando Ave., Suite A  
Charlotte, NC 28206

Tel: 704-376-8544  
Fax: 704-376-5043  
Cell: 980-721-7172

NYSE: FRM    www.furmanite.com    Imcsv

From safety posters to operational guides, Beaded creates quality eye-catching media that is certain to stand out among the rest.



**MAMMOET**

**Dan Wrocinski**  
Business Development

Office Phone 815-725-5603  
Fax 815-725-5604  
Mobile 219-218-8400  
Email dan.wrocinski

Worldwide specialists in heavy lifting and transport

**FURMANITE**

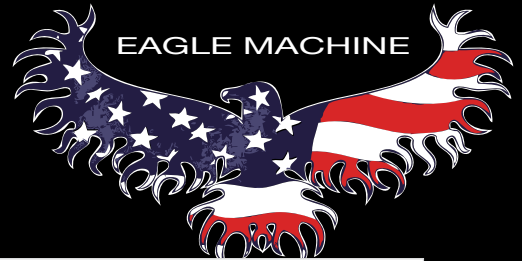
Furmanite America, Inc.  
101 Old Underwood Road - Building F  
Lufkin, TX 77621

**EAGLE FABRICATION & TRAILER SERVICE**

**GARY GIBSON**  
OWNER  
281-520-1363

10601 HANSELMAN RD  
MANVEL, TX 77578  
LUMC.IRONEAGLE@ATT.NET

**EAGLE MACHINE**



Employees and  
Contractors....



Put on your thinking cap  
We want your ideas



Upstream, Midstream, & Downstream  
**Oil, Gas & LNG Projects**  
Domestic & International

Over 600,000 Manufacturers

**Eric Davenport**  
Business Development

www.manufacturingdc.com  
3102 Maple Ave. Suite 400  
Dallas, TX 75201

Phone 214-800-2313  
Fax 800-854-0495  
Mobile 932-526-9538

manufacturingdc.com



**Materials Management**

**Sabrina Schwertner**  
Business Development Director  
sabrina@link2scope.com

PO Box 5554  
Alvin, TX 77512

Office: 832-239-5131  
Fax: 832-201-9536  
832-205-4363

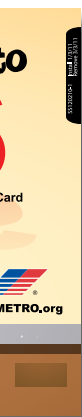


Joy International Services  
1322 Center Street Suite B #180  
Deer Park, TX 77536

**Joy Gibson**

Phone: 281-779-7501

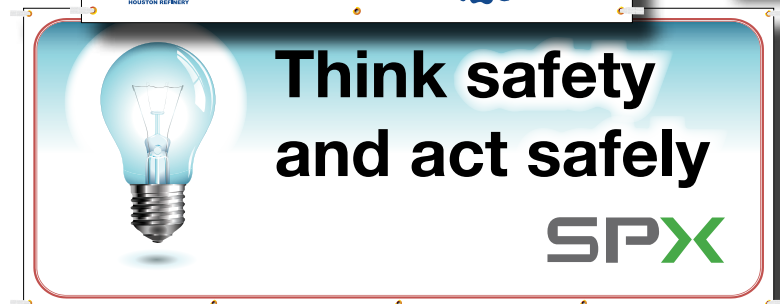
j.gibson@joyintlservices.com

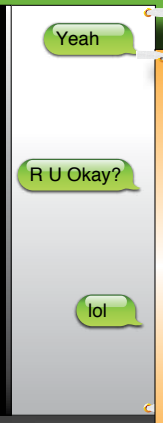


# Banners

Beaed provides flexible, portable and affordable banners to convey any safety message. Our banners help draw attention from a distance, promoting safety awareness and emergency standards.

Beaed offers Custom Banners. Please call us for a quote.





How many reasons do you need to work safely?

Start **A**nd **F**inish **E**very **T**ask **s**afel**Y**

I am the **KEY**

to stopping unsafe work.

ConocoPhillips  
Sweeny Refinery

**AUSTIN SAFETY AWARENESS**

**I GOT CAUGHT WORKING SAFE**

**DON'T COME UP SHORT ON SAFETY**

**Drips**  
cause slips

CLEAN UP SPILLS

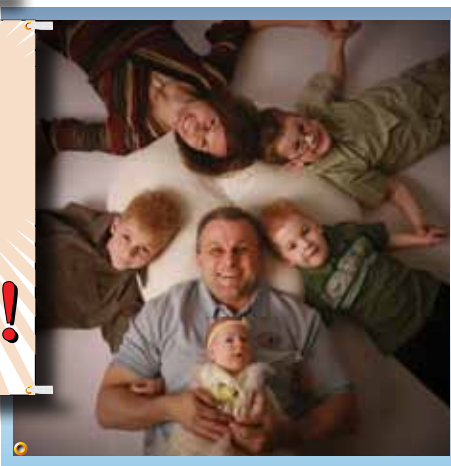
**GOOD HOUSEKEEPING ADDS TO SAFETY**

**Safety** has no... **QUITTING TIME**

**DU PONT**  
REG. U.S. PAT. & TM. OFF.

**GET SAFETY IN FOCUS**

**Take Safety to Heart We ALL need you!**



**Safety & Family, The VPP Way!**

# Corporate Apparel & Uniforms

Beaed offers a full line of work clothing and more. Choose from coveralls and shirts to outerwear and flame-resistant wear. We offer a variety of styles, sizes, colors and fabrics for several industries.

- Safety Vests
- Safety Shirts
- Nomex
- Coveralls
- Embroidered Logos
- Uniforms

We also offer custom wear for your specialty needs.







beAed



# Incentive & Promotional Products

Looking for Promotional Products?

You've come to the right place.

Whether you are looking for a specific item or just browsing for ideas, Beaed is your one-stop shopping source. From fun items to the traditional, you can easily shop for some of the hottest items on the market.







Trusted by Companies Who Care

**ExxonMobil**



bp



**BOEING**



**MAMMOET**

Denbury 

**CenterPoint  
Energy**

**BASF**

The Chemical Company



**FURMANITE**

**VALERO**

**ConocoPhillips**



**lyondellbasell**

1-800-972-6741

[www.beaed.com](http://www.beaed.com)

281-331-2035